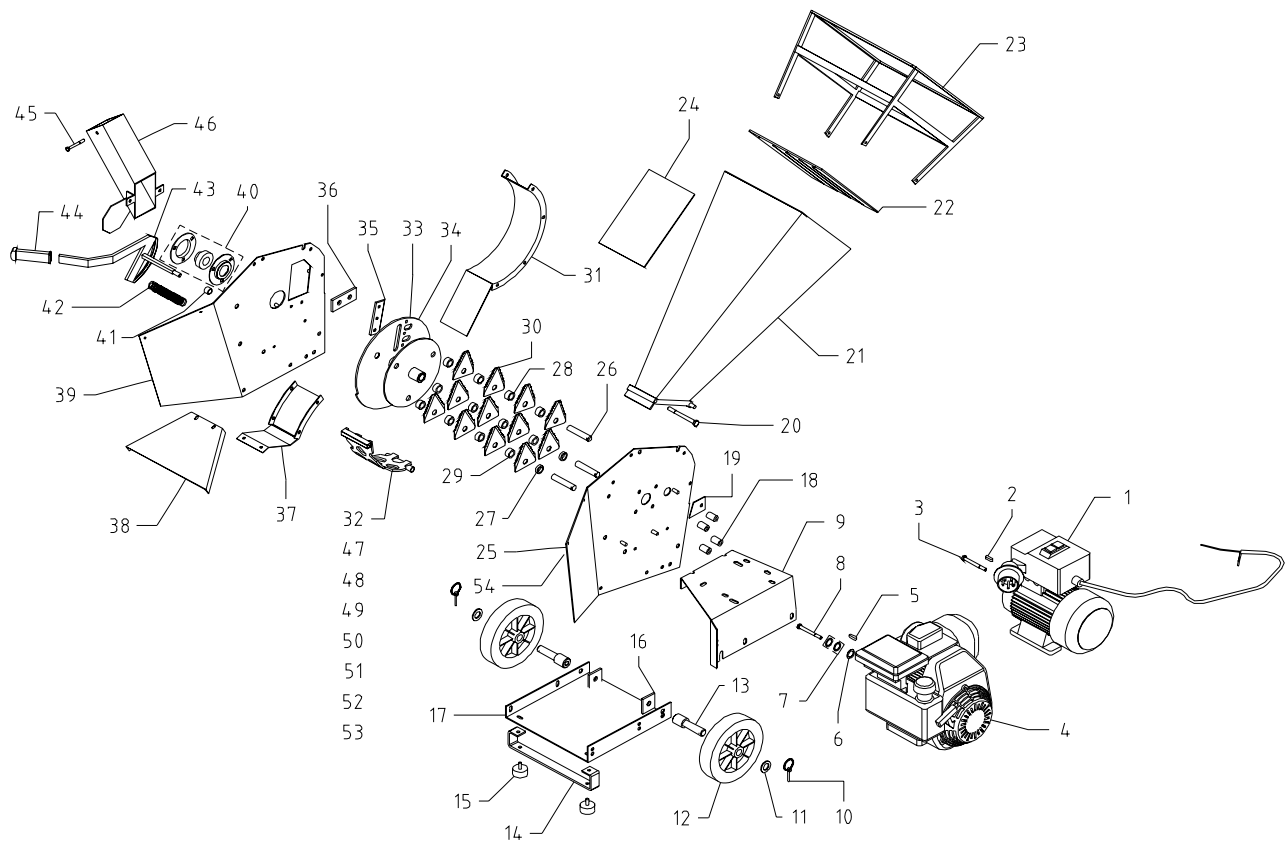


## 12. SPARES BIO 60 E / B



### 13. SPARES BIO 60 E / B

Pos	Code	Description	Q.ty
1	015300210	Electric motor HP 3	1
2	530003010	Electric motor key	1
3	501100008	Screw TCEI M 8x110	1
4	060004300	Engine GC 160 HP 5	1
5	530003116	Engine key	1
6	060002200	Spacer PS $\phi$ 20	1
7	060002201	Spacers PS $\phi$ 19	X
8	505160412	Screw TCEI 5/16x4" ½ UNF	1
9	070001800	Engine / motor basement	1
10	530005500	Snap on clips	2
11	510002520	Washer $\phi$ 20	2
12	070000010	Wheel	2
13	070005300	Pin axle	2
14	070001700	Feet support	1
15	013900000	Rubber feet	2
16	070005301	Plate	2
17	070001600	Machine basement	1
18	060004100	Spacer L=28	4
19	070003839	Plate covering the hole galvanized	1
20	501200010	Screw TE M 10x120	1
21	070000720	Upper hopper	1
22	080000301	Upper hopper rubber	1
23	080006010	Hopper protection	1
24	070001801	Adesive group	1
25	070003800	Electric frame	1
26	060002600	Rotor bar	3
27	080007100	Spacer H=7	2
28	080007090	Spacer H=14	4
29	080007070	Spacer H=12.5	8
30	070007060	Blade TR 3	12
31	072003701	Round bottom	1
32	070002900	Screen Ø 25	1
33	060002300	Electric rotor	1
34	060002400	Engine rotor	1
35	013300800	Clipper blade	1
36	013000060	Counter-blade	1
37	070000601	Upper round baffle	1
38	070001601	Baffle discharge	1

#### 14. SPARES BIO 60 E / B

Pos	Description	Q.ty	Code
39	Clipper frame	1	070001100
40	Bearing unit SBPF 205	1	550002125
41	Spacer L=17	1	080005019
42	Spring with protection	1	570008010
43	Screen lever	1	070002550
44	Hand grip 25x8	1	540002508
45	Screw M 6x90	2	500010120
46	Chipper mouthpiece	1	070001200
47	Screen Ø 8*	1	070003000
48	Screen Ø 10*	1	070003100
49	Screen Ø 12*	1	070003200
50	Screen Ø 15*	1	070003300
51	Screen Ø 20*	1	070003400
52	Screen Ø 30*	1	070003500
53	Screen Ø 35*	1	070003600
54	Engine frame	1	070003900

\* Optional equipment